



Vegetation Control Service, Inc.

2342 MAIN STREET
ATHOL, MA 01331
OFF: 978-249-5348
FAX: 978-249-4784
800-323-7706

56 HILL ROAD
FRANKLIN, NH 03235
OFF: 603-934-4665
FAX: 603-934-6260

134 LEVERETT ROAD
SHUTESBURY, MA 01072
413-259-1414

April 1st, 2022

Town of Northwood
818 1st NH Turnpike
Northwood, NH 03261

To Selectman/Mayor/or Town Manager

Please be advised, that New Hampshire Electric Co-op (NHE CO-OP) and its contractor consultant, Vegetation Control Service, Inc. (VCS) intends to selectively apply herbicides to undesirable vegetation growing within power line rights of way corridors located in your community.

This treatment will be performed by experienced, State of NH Certified Applicators, authorized by Special Permit #044, issued by the NH Division of Pesticide Control. In compliance with State of NH, Code of Administrative Rules, Pes 505.06 regarding public notification of herbicide treatments to rights of way, we have enclosed the following for your information and review.

- Copies of the "Herbicide Use Notification", including the identification of the power lines scheduled for treatment, herbicide products to be used and an attached returnable coupon for those individuals who desire personal notification or may want to advise us of a sensitive area of concern near the right of way.
- Copy of the topographical maps, depicting the location of the power line, rights of way intended for treatment.
- Copies of (NHE-CO-OP's) door hanger notification of herbicide spraying to be left with each power line right of way abutter along with a copy of the "Herbicide Use Notification".

In addition to this enclosed notice, the "Herbicide Use Notice" will be published in a newspaper of State wide circulation and those of local circulation, to help inform the public. We encourage you however, to post this notice in customary places of public notification including town websites as you deem appropriate.

We would also request that you submit a copy of this notification to your local Health Board or Water Department

If you have any questions, comments or concerns about the actual herbicide treatment program, please feel free to contact me at **603-325-3227**, during the hours of 8:00 am and 4:00 pm, Monday thru Friday.

If you have questions concerning NHE CO-OP's lines, poles, facilities or general information relating to utility issues, please contact:

Cory Keeffe, Utility Arborist

603-536-8460

New Hampshire Electric Co-op

579 Tenney Mountain Highway

Plymouth, NH 03264

Telephone: Monday thru Friday, 6:00 am to 3:30 pm

On behalf of NHE CO-OP, we thank you in advance for your assistance and cooperation with this project.

Sincerely,

Mike Couture, Vegetation Control Service, Inc.

NHEC Project Manager

1-603-325-3227

Enclosed (s):

- Herbicide Use Notification/Return Coupons
- Topographical Map
- NHE CO-OP Abutter Door Hangers

HERBICIDE USE NOTIFICATION

NEW HAMPSHIRE ELECTRIC CO-OP (NHE CO-OP) intends to apply herbicides along various power-line rights-of-way during 2022. The following herbicides: Escort XP, Garlon 4 Ultra, Krenite S, On Deck and Clash may be used for treatment. Treatments are scheduled to commence on or about the 15th of JUNE 2022. The following lines, taps and their respective municipalities are scheduled for treatment:

TOWN	LINE	TOWN	LINE	TOWN	LINE	TOWN	LINE
Acworth	4,8	Conway	8,8,14,15,601	Landaff	2	Plymouth	10,13,14,15,16,17,18,20,21,22,31
Alton	2,20,300,301,303,308,313,315,316,325,502	Croydon	5,8	Langdon	8	Raymond	R2,13
Andover	12,16,17,19,18,20,21,22,23,24,25	Center Harbor	15,20,21,22,30,110,117,140	Lee	12	Rumney	8X,12,14,15,17,18,74,1672
Ashland	15,20,21,22,30,32,35,100	Danville	17	Lempster	1,2,3,6,13,14	Salisbury	23,24,25
Auburn	15	Deerfield	35	Lisbon	3,4	Sanbornton	126,129
Barnstead	2,20,300,315,316,503	Derry	15	Littleton	3,508,670	Sandwich	2,4,12,,60,61,62,63,64,69,142153,144,153
Bartlett	6,8,9,14,15,6513,601,6513,TR	Dorchester	76,77,78,7,9	Madison	11	Springfield	5,8
Bath	2,4	Durham	12	Marlow	3,13,14	Stewartstown	5,7
Belmont	300,19	Eaton	11	Meredith	60,61,62,63,64,69,110	Sugar Hill	2
Benton	6	Effingham	6	Monroe	508,670	Sunapee	5,8
Bridgewater	15,20,21,22,30,31,32,35,100	Epping	R2,13	Moultonboro	1,2,60,61,62,63,64,69,142,144,146,149,150,153,168	Thornton	51,54,55,56,60,61,64,500
Bristol	20,21,15,22	Epsom	3,35	New Durham	315,314502,313	Tilton	12
Brookfield	6	Farmington	315	New Hampton	1,2,15,20,21,22,60,61,62,63,64,69,,122	Tuftonboro	4,5,166,168,174,175
Campion	10,12,13,16,30,35,100,1732	Franklin	1,2,3,18,TR	Northfield	19	Unity	1,3,6,8
Canaan	7,9,76,77,78	Freedom	11	Northwood	3,35	Wakefield	6
Canterbury	19	Gilmananton	2,20,300,309,312,317	Nottingham	35,R2,13	Warren	72,8X,74
Charlestown	8	Goshen	1P	Orange	7,77,78,76	Washington	3,14,13
Chester	14,15	Grafton	7,76,77,78	Orford	8X,9,9F,72	Wentworth	72,8X,74,9F
Claremont	6	Hanover	9	Ossipee	3,5,6,10	Wilmot	2,12,16,17,18,20,21,22,23
Clarksville	7	Harts Location	513	Piermont	8X,9,9F,72	Wolfeboro	6
Colebrook	1,5	Haverhill	6	Pittsburg	7	Woodstock	54,55,56,60,61,64,500
Columbia	4	Hebron	14,15,16,17,18	Pittsfield	503		
		Hill	1,2,3,18,TR	Plainfield	6		
		Holderness	13,30,32,35,100,110				

NHE CO-OP lines can be identified by a metal tag attached to the pole with the following letter initials "NHE CO-OP" followed by a line identification number and a pole number usually immediately under the co-op label.

In accordance with the N.H. Division of Pesticide Control Regulations, individual landowners whose receive individual notification, fill out the attached Notification Request Coupon and return to the address as indicated below no later than **JUNE 1st, 2022**. Requests received after this date will not be considered for this treatment cycle.

In addition to the written notification, individual landowners whose property abuts or over whose property the right-of-way passes, have the right to request and receive the approximate date, (within 5 days before or 5 days after the actual date of application) that herbicides will be or have been applied in your area.

Further information may be requested by contacting: VCS (Consultant to NHE CO-OP) Michael Couture, Project Manager - 2342 Main Street, Athol, MA 01331, Telephone 603-325-3227.)

COUPON FOR PERSONAL NOTIFICATION REQUEST:

NAME: _____ TOWN OF AFFECTED PROPERTY: _____
 STREET: _____ TOWN: _____ STATE: _____ ZIP: _____
 TELEPHONE: DAY _____ NIGHT: _____
 UTILITY INITIALS ON POLE _____ NUMBERS _____

REQUESTING:

- 30 DAY PRIOR WRITEN NOTIFICATION
- 5 DAY BEFORE OR 5 DAY POST APPLICATION NOTIFICATION

In accordance with State Regulations, it is the duty of each landowner or resident to make VCS aware of the location of potentially affected private water supplies and any other environmentally sensitive areas where herbicide application should be further restricted.

- Spring or Well
 - Crops or Pasture
 - Other
- Send Coupons to: VCS C/O Michael Couture, Project Manager, 2342 Main Street, Athol, MA 01331

Thirty Day written notification must be received by Michael Couture, Project Manager no later than **JUNE 1st, 2022**. Requests received after this date will not be granted until next treatment cycle.

— NOTICE —

to Homeowners Along Electric Distribution Rights of Way



New Hampshire Electric Co-op (NHEC) has contracted with Vegetation Control Service, Inc. (VCS) to conduct an Herbicide Application Program on or adjacent to your property. VCS is an industry leader with 40 years of herbicide application experience in right of way maintenance programs.

This herbicide application will be part of NHEC's Integrated Vegetation Management Program (IVMP). A selective herbicide application will be used to control regrowth of hardwood stump sprouts from recent cutting, trimming or mowing operations on the distribution system. This is very essential to provide safe and reliable electric delivery. This selective herbicide application prevents undesirable, tall growing tree species from growing up into the conductors. It also establishes a low growing, stable plant community that allows crews working to maintain or restore power, access to the lines.

The use of herbicides as part of our IVMP is regulated by federal and state statutes and regulations. These requirements protect sensitive areas such as: Surface Waters, Public and Private Wells, Wetlands, Visually sensitive areas near roads and/or residences.

The herbicide products used for this application have been registered with the Environmental Protection Agency (EPA) and will be applied by certified applicators according to specific label directions. Applications will be selective, in that the herbicides will be applied directly to undesirable target species.

If you have any concerns about this application please contact VCS within 14 days of the date on reverse side.



This notice was delivered on: _____

Treatments are scheduled to commence on or about: _____

VCS Representative: _____

May be contacted at: **603-325-3227**

NHEC Line #: _____ Pole #: _____

Town: _____, NH

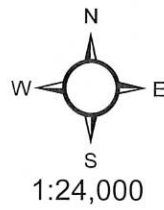
Contact Hours: **Monday-Friday / 8am-4pm**

NHEC lines can be identified by a metal tag attached to the pole with the letters "NHE CO-OP" followed by a line identification # and pole # usually immediately under the "co-op" label.

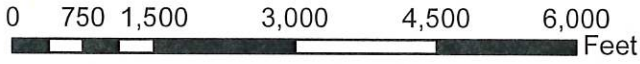
NHEC believes that our IVMP is the most responsible way to provide safe, reliable electric distribution service to our members at a reasonable cost with the least impact to our environment. Please visit our website for more information about NHEC's IVMP at:

www.nhec.com

QS1415-LE13, 1510-3F, 1714-3H
Deerfield, Epsom, Northwood
2022 Treatment Map
40.96 Potential Acres
Raymond District

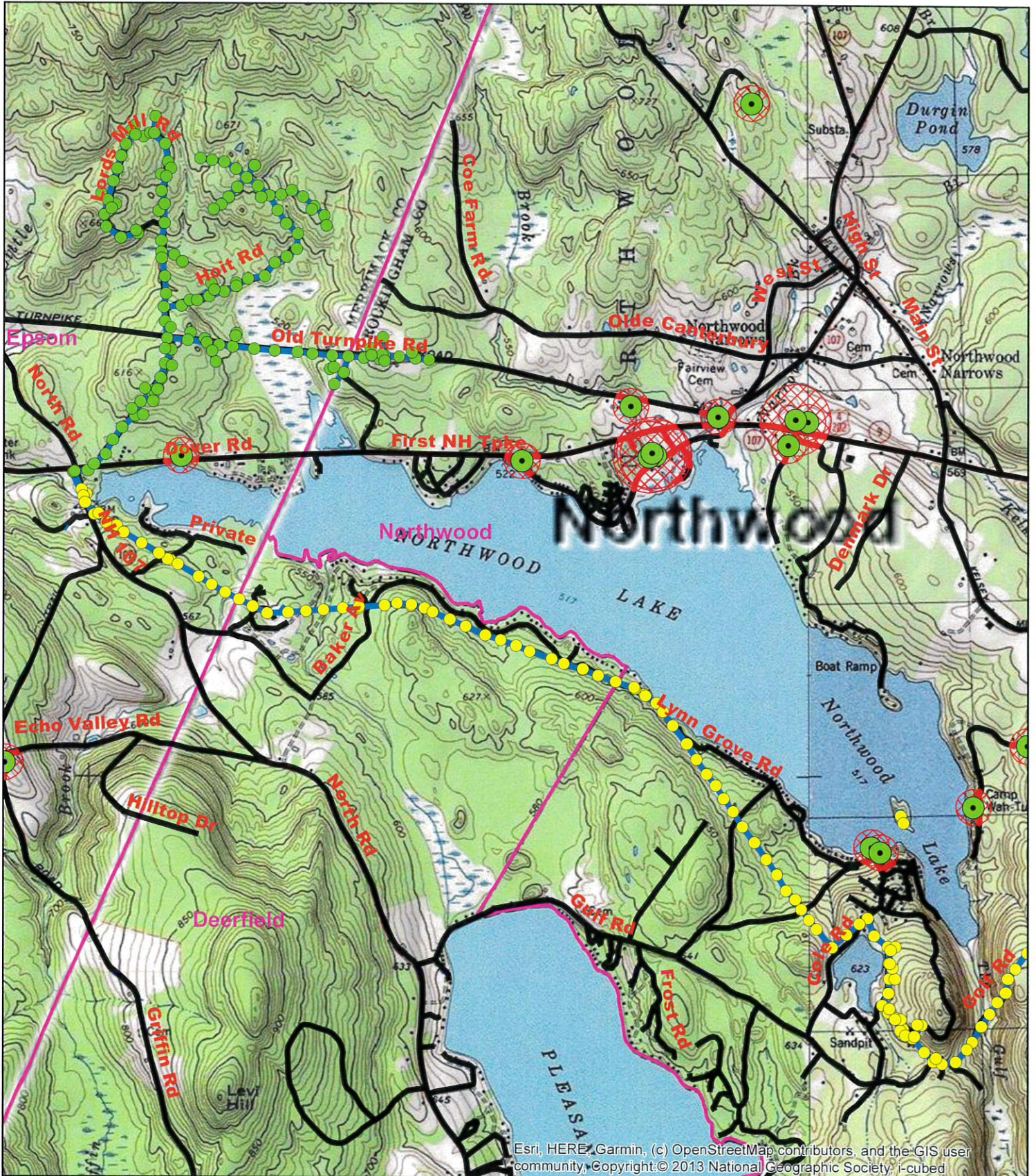


1:24,000



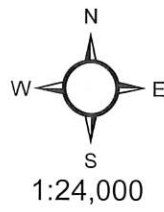
Legend

- 1714-3H_3H_Tap_Northwood_Poles
- 1510-3F_Epsom_Northwood_Poles
- QS1415-LE13_Deerfield_Epsom_Northwood_Nottingham_Poles
- 2022 Public Wells
- 2022 Private Wells
- 2022 Roadside No Spray Segments
- 2022 Public Well Buffers
- 2022 Public Surface Water Buffer



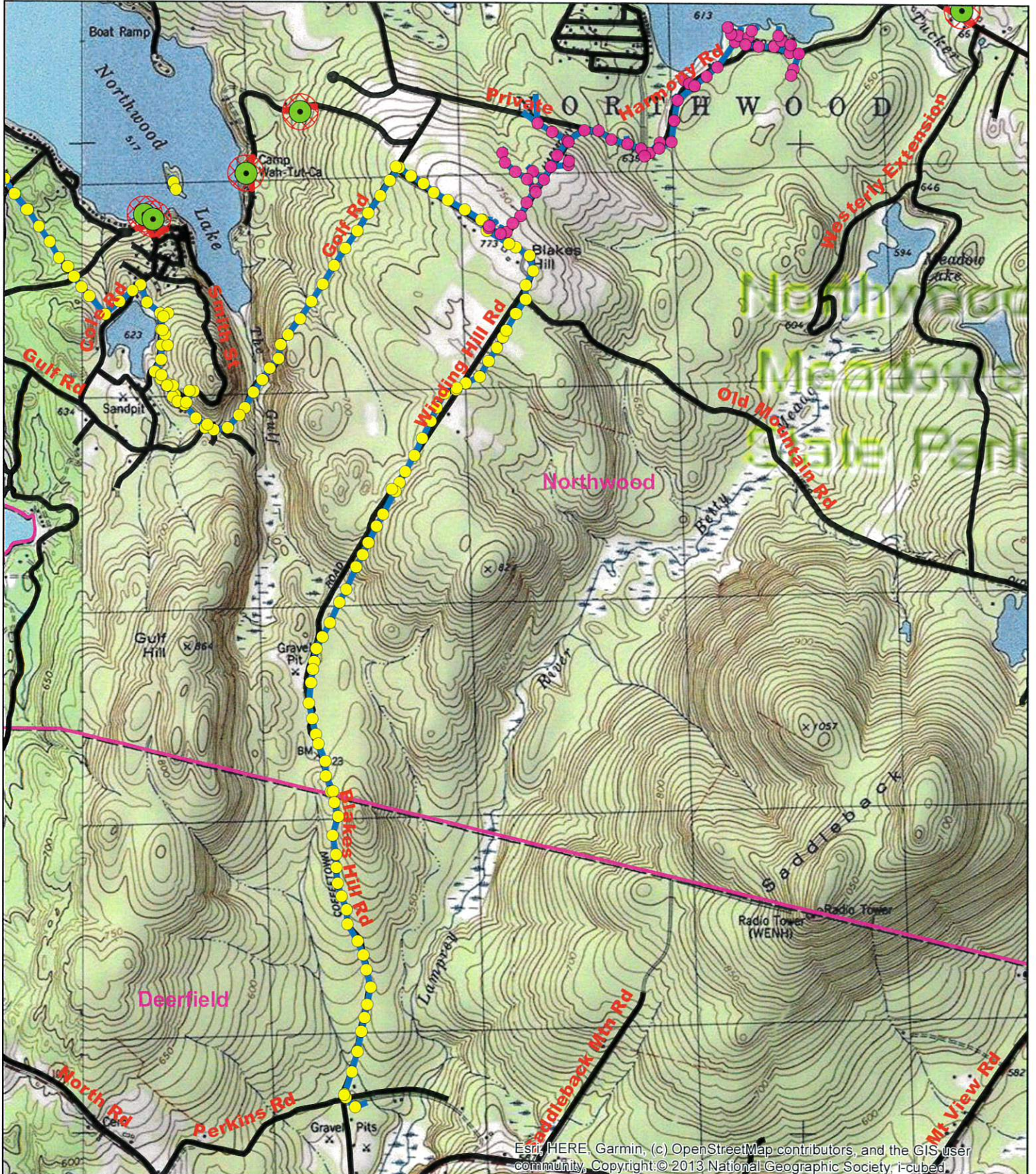
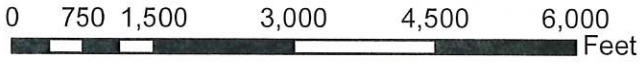
Esri, HERE, Garmin, (c) OpenStreetMap contributors, and the GIS user community, Copyright © 2013 National Geographic Society, I-cubed

QS1415-LE13, 1510-3F, 1714-3H
Deerfield, Epsom, Northwood
2022 Treatment Map
40.96 Potential Acres
Raymond District



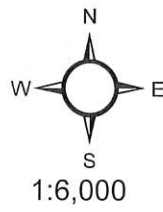
Legend

- 1714-3H_3H_Tap_Northwood_Poles
- 1510-3F_Epsom_Northwood_Poles
- QS1415-LE13_Deerfield_Epsom_Northwood_Nottingham_Poles
- 2022 Public Wells
- 2022 Private Wells
- 2022 Roadside No Spray Segments
- 2022 Public Well Buffers
- 2022 Public Surface Water Buffer



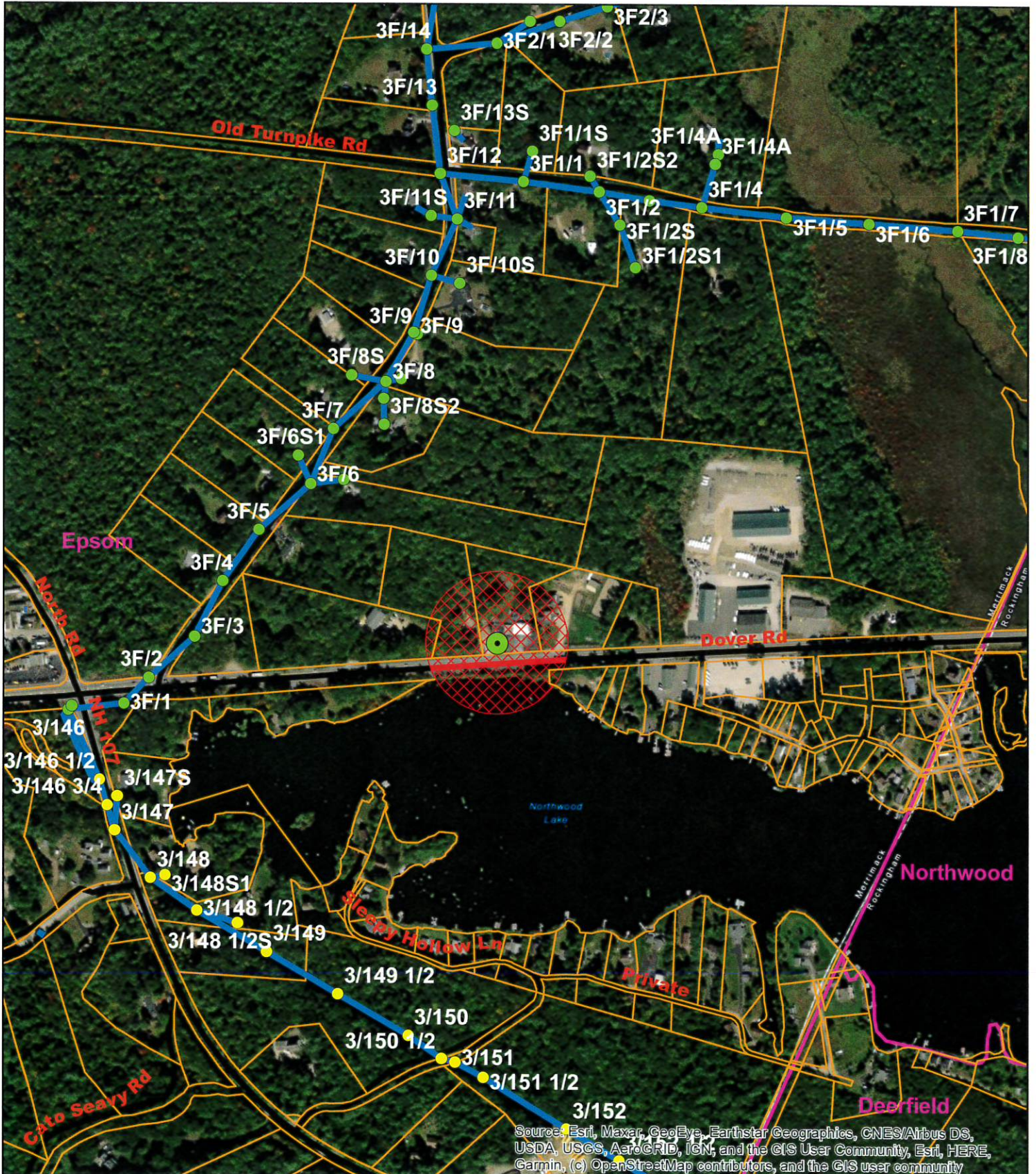
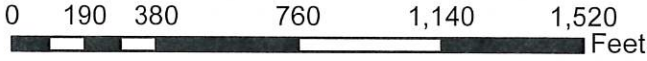
Esri, HERE, Garmin, (c) OpenStreetMap contributors, and the GIS user community, Copyright © 2013 National Geographic Society, i-cubed.

QS1415-LE13, 1510-3F, 1714-3H
 Deerfield, Epsom, Northwood
 2022 Treatment Map
 40.96 Potential Acres
 Raymond District



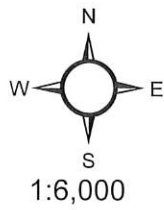
Legend

- 1714-3H_3H_Tap_Northwood_Poles
- 1510-3F_Epsom_Northwood_Poles
- QS1415-LE13_Deerfield_Epsom_Northwood_Nottingham_Poles
- 2022 Public Wells
- 2022 Private Wells
- 2022 Roadside No Spray Segments
- 2022 Public Well Buffers
- 2022 Public Surface Water Buffer



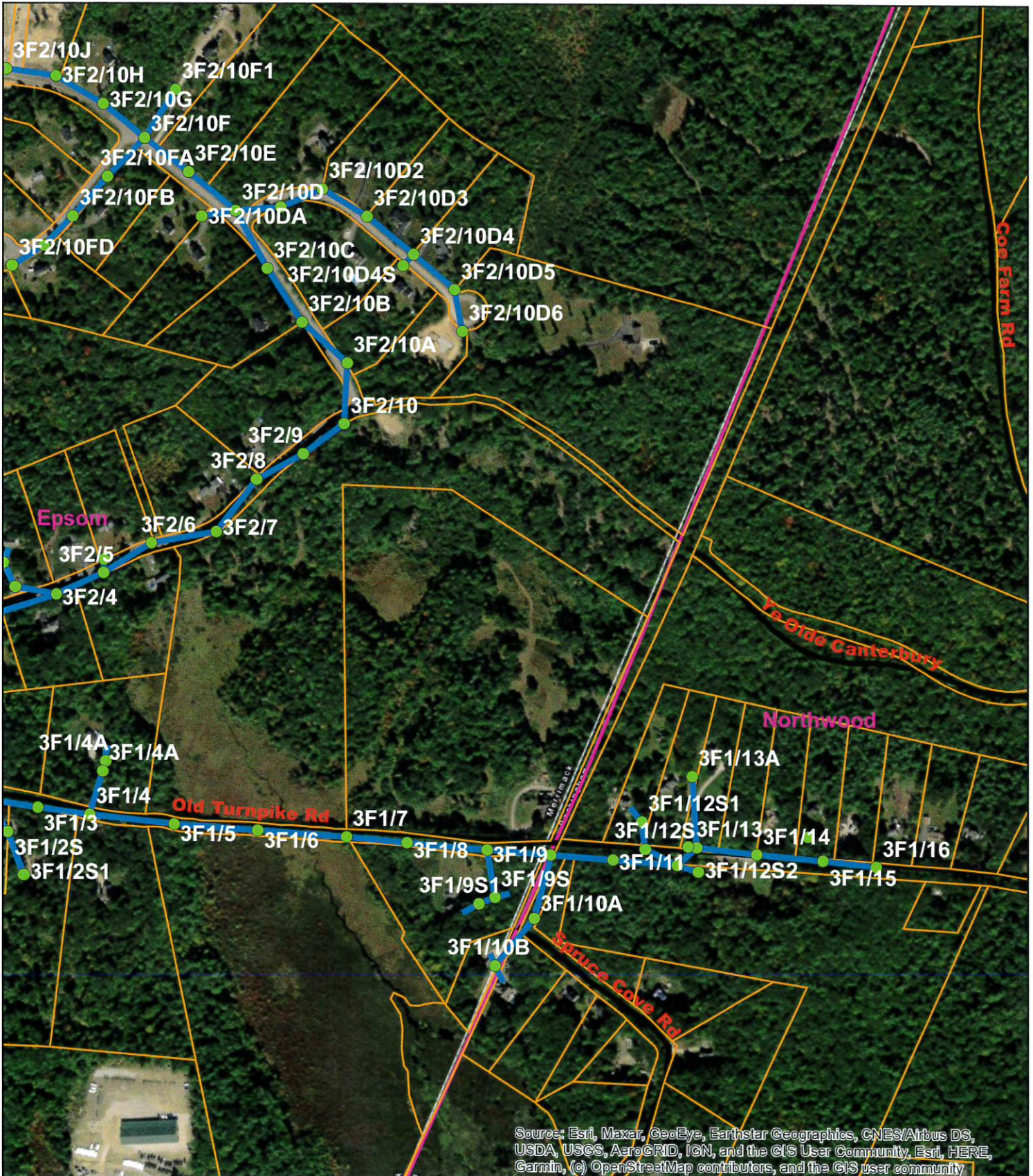
Source: Esri, Maxar, GeoEye, Earthstar Geographics, CNES/Airbus DS, USDA, USGS, AeroGRID, IGN, and the GIS User Community, Esri, HERE, Garmin, (c) OpenStreetMap contributors, and the GIS user community

QS1415-LE13, 1510-3F, 1714-3H
Deerfield, Epsom, Northwood
2022 Treatment Map
40.96 Potential Acres
Raymond District



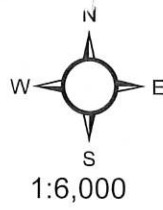
Legend

- 1714-3H_3H_Tap_Northwood_Poles
- 1510-3F_Epsom_Northwood_Poles
- QS1415-LE13_Deerfield_Epsom_Northwood_Nottingham_Poles
- 2022 Public Wells
- 2022 Private Wells
- 2022 Roadside No Spray Segments
- 2022 Public Well Buffers
- 2022 Public Surface Water Buffer



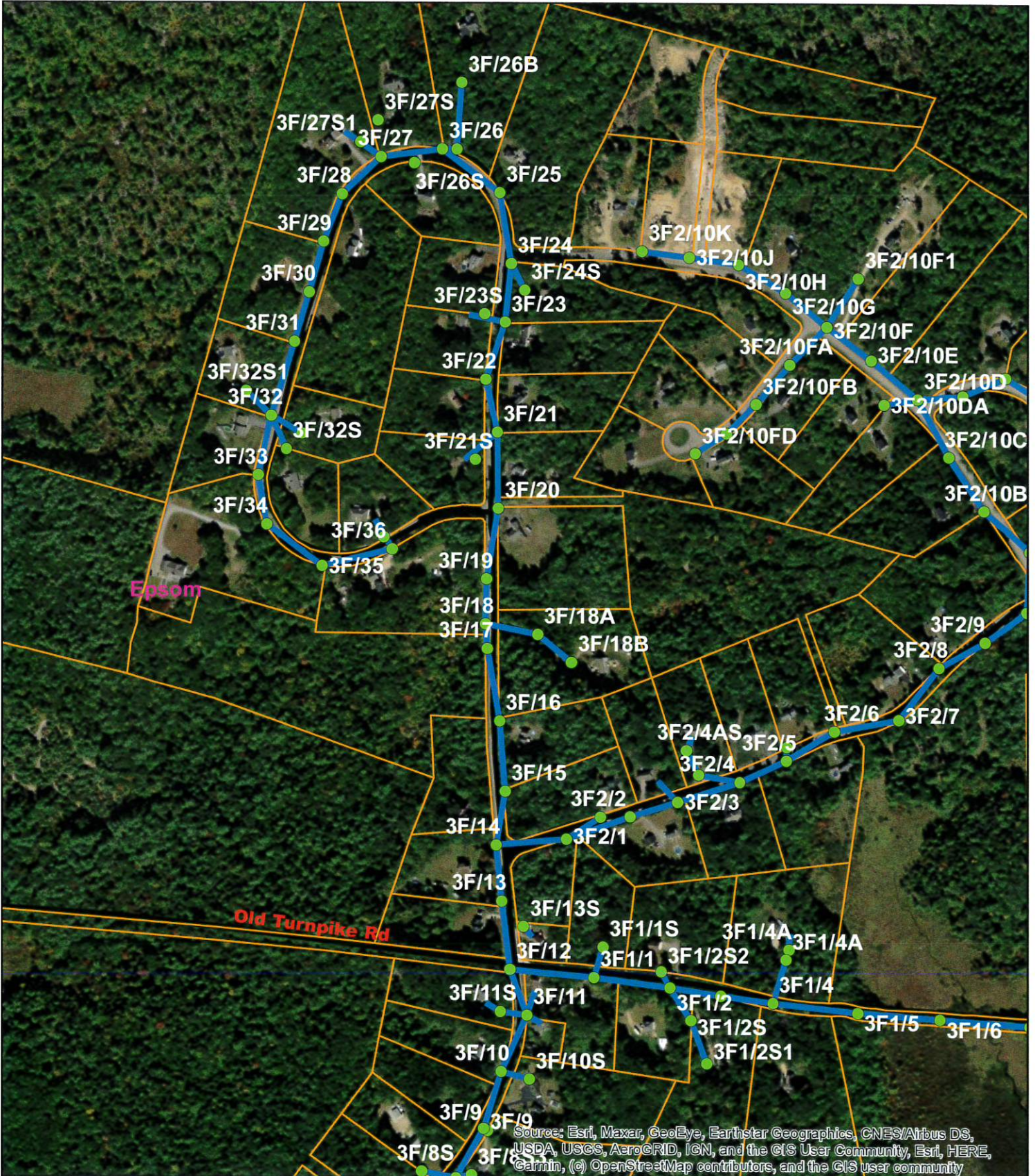
Source: Esri, Maxar, GeoEye, Earthstar Geographics, CNES/Airbus DS, USDA, USGS, AeroGRID, IGN, and the GIS User Community, Esri, HERE, Garmin, (c) OpenStreetMap contributors, and the GIS user community

QS1415-LE13, 1510-3F, 1714-3H
 Deerfield, Epsom, Northwood
 2022 Treatment Map
 40.96 Potential Acres
 Raymond District



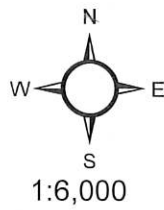
Legend

- 1714-3H_3H_Tap_Northwood_Poles
- 1510-3F_Epsom_Northwood_Poles
- QS1415-LE13_Deerfield_Epsom_Northwood_Nottingham_Poles
- 2022 Public Wells
- 2022 Private Wells
- 2022 Roadside No Spray Segments
- 2022 Public Well Buffers
- 2022 Public Surface Water Buffer



Source: Esri, Maxar, GeoEye, Earthstar Geographics, CNES/Airbus DS, USDA, USGS, AeroGRID, IGN, and the GIS User Community, Esri, HERE, Garmin, (c) OpenStreetMap contributors, and the GIS user community

QS1415-LE13, 1510-3F, 1714-3H
 Deerfield, Epsom, Northwood
 2022 Treatment Map
 40.96 Potential Acres
 Raymond District



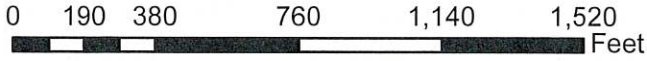
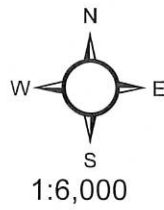
Legend

- 1714-3H_3H_Tap_Northwood_Poles
- 1510-3F_Epsom_Northwood_Poles
- QS1415-LE13_Deerfield_Epsom_Northwood_Nottingham_Poles
- 2022 Public Wells
- 2022 Private Wells
- 2022 Roadside No Spray Segments
- 2022 Public Well Buffers
- 2022 Public Surface Water Buffer



Source: Esri, Maxar, GeoEye, Earthstar Geographics, CNES/Airbus DS, USDA, USGS, AeroGRID, IGN, and the GIS User Community, Esri, HERE, Garmin, (c) OpenStreetMap contributors, and the GIS user community

QS1415-LE13, 1510-3F, 1714-3H
 Deerfield, Epsom, Northwood
 2022 Treatment Map
 40.96 Potential Acres
 Raymond District



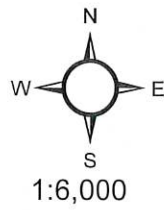
Legend

- 1714-3H_3H_Tap_Northwood_Poles
- 1510-3F_Epsom_Northwood_Poles
- QS1415-LE13_Deerfield_Epsom_Northwood_Nottingham_Poles
- 2022 Public Wells
- 2022 Private Wells
- 2022 Roadside No Spray Segments
- 2022 Public Well Buffers
- 2022 Public Surface Water Buffer



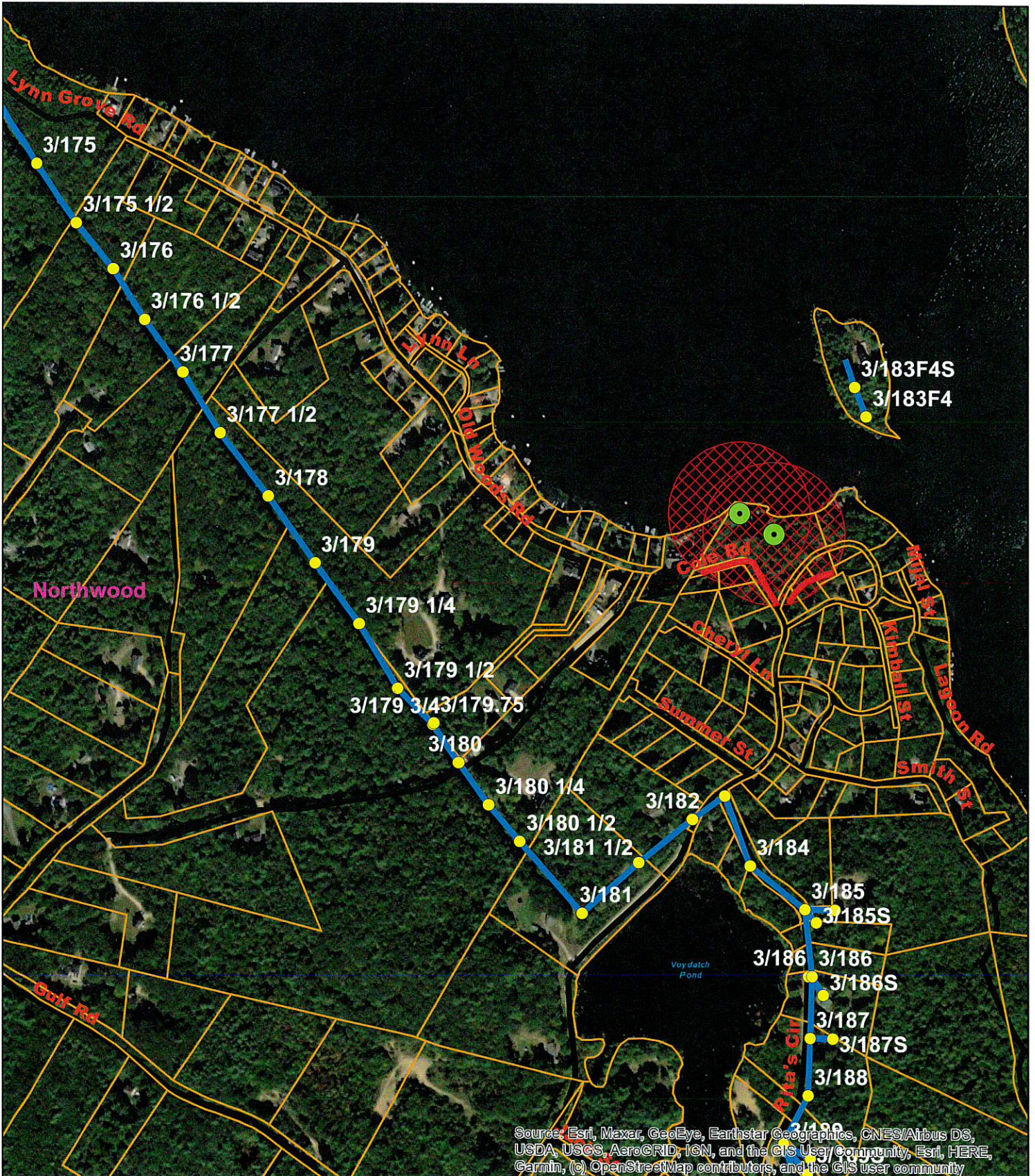
Source: Esri, Maxar, GeoEye, Earthstar Geographics, CNES/Airbus DS, USDA, USGS, AeroGRID, IGN, and the GIS User Community, Esri, HERE, Garmin, (c) OpenStreetMap contributors, and the GIS user community

QS1415-LE13, 1510-3F, 1714-3H
Deerfield, Epsom, Northwood
2022 Treatment Map
40.96 Potential Acres
Raymond District



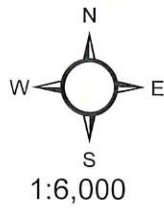
Legend

- 1714-3H_3H_Tap_Northwood_Poles
- 1510-3F_Epsom_Northwood_Poles
- QS1415-LE13_Deerfield_Epsom_Northwood_Nottingham_Poles
- 2022 Public Wells
- 2022 Private Wells
- 2022 Roadside No Spray Segments
- 2022 Public Well Buffers
- 2022 Public Surface Water Buffer



Source: Esri, Maxar, GeoEye, Earthstar Geographics, CNES/Airbus DS, USDA, USGS, AeroGRID, IGN, and the GIS User Community, Esri, HERE, Garmin, (c) OpenStreetMap contributors, and the GIS user community

QS1415-LE13, 1510-3F, 1714-3H
 Deerfield, Epsom, Northwood
 2022 Treatment Map
 40.96 Potential Acres
 Raymond District



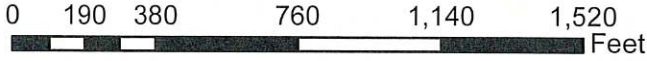
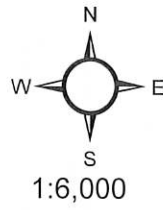
Legend

- 1714-3H_3H_Tap_Northwood_Poles
- 1510-3F_Epsom_Northwood_Poles
- QS1415-LE13_Deerfield_Epsom_Northwood_Nottingham_Poles
- 2022 Public Wells
- 2022 Private Wells
- 2022 Roadside No Spray Segments
- 2022 Public Well Buffers
- 2022 Public Surface Water Buffer



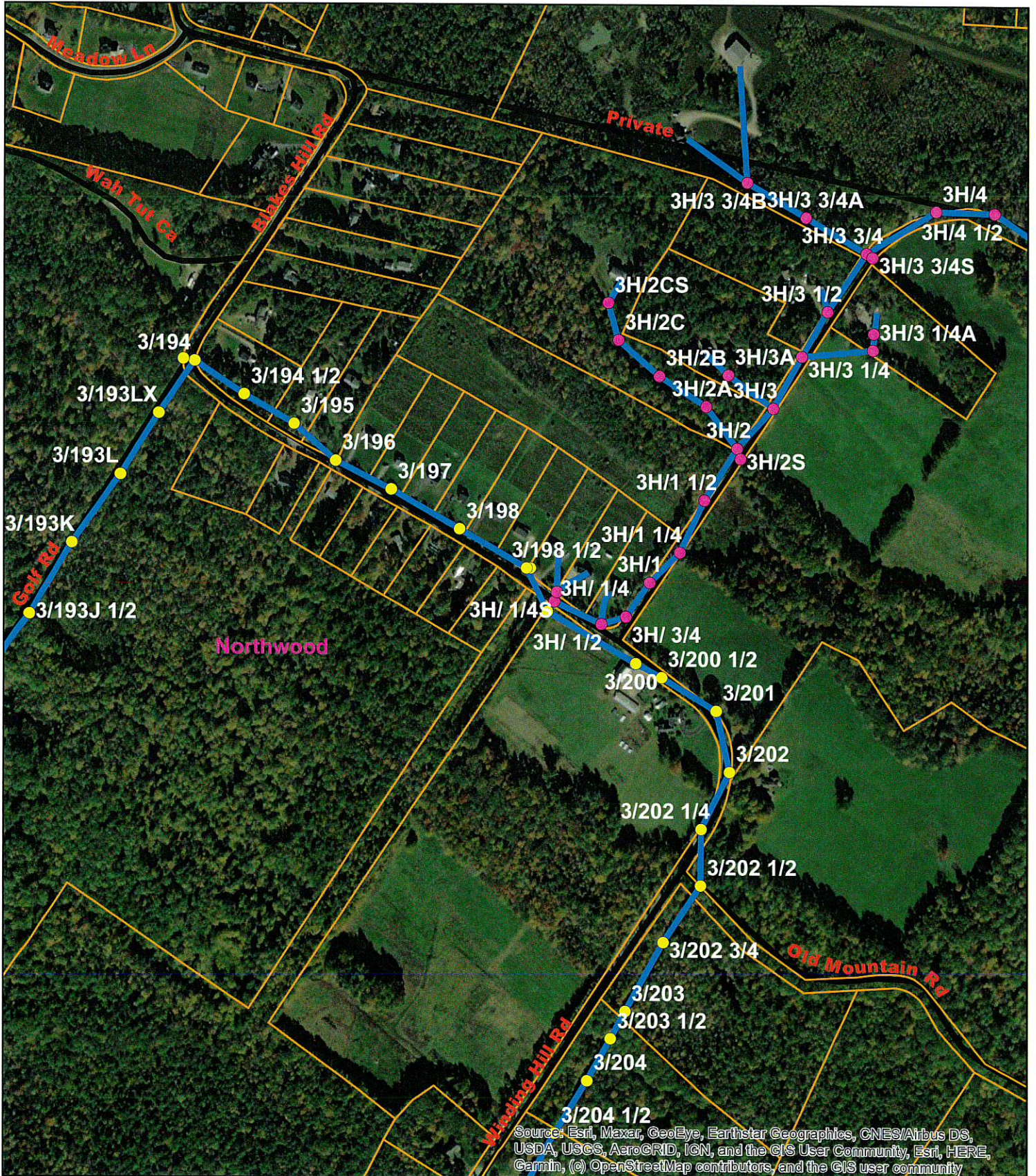
Source: Esri, Maxar, GeoEye, Earthstar Geographics, CNES/Airbus DS, USDA, USGS, AeroGRID, IGN, and the GIS User Community, Esri, HERE, Garmin, (c) OpenStreetMap contributors, and the GIS user community

QS1415-LE13, 1510-3F, 1714-3H
Deerfield, Epsom, Northwood
2022 Treatment Map
40.96 Potential Acres
Raymond District



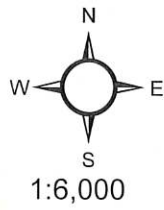
Legend

- 1714-3H_3H_Tap_Northwood_Poles
- 1510-3F_Epsom_Northwood_Poles
- QS1415-LE13_Deerfield_Epsom_Northwood_Nottingham_Poles
- 2022 Public Wells
- 2022 Private Wells
- 2022 Roadside No Spray Segments
- 2022 Public Well Buffers
- 2022 Public Surface Water Buffer



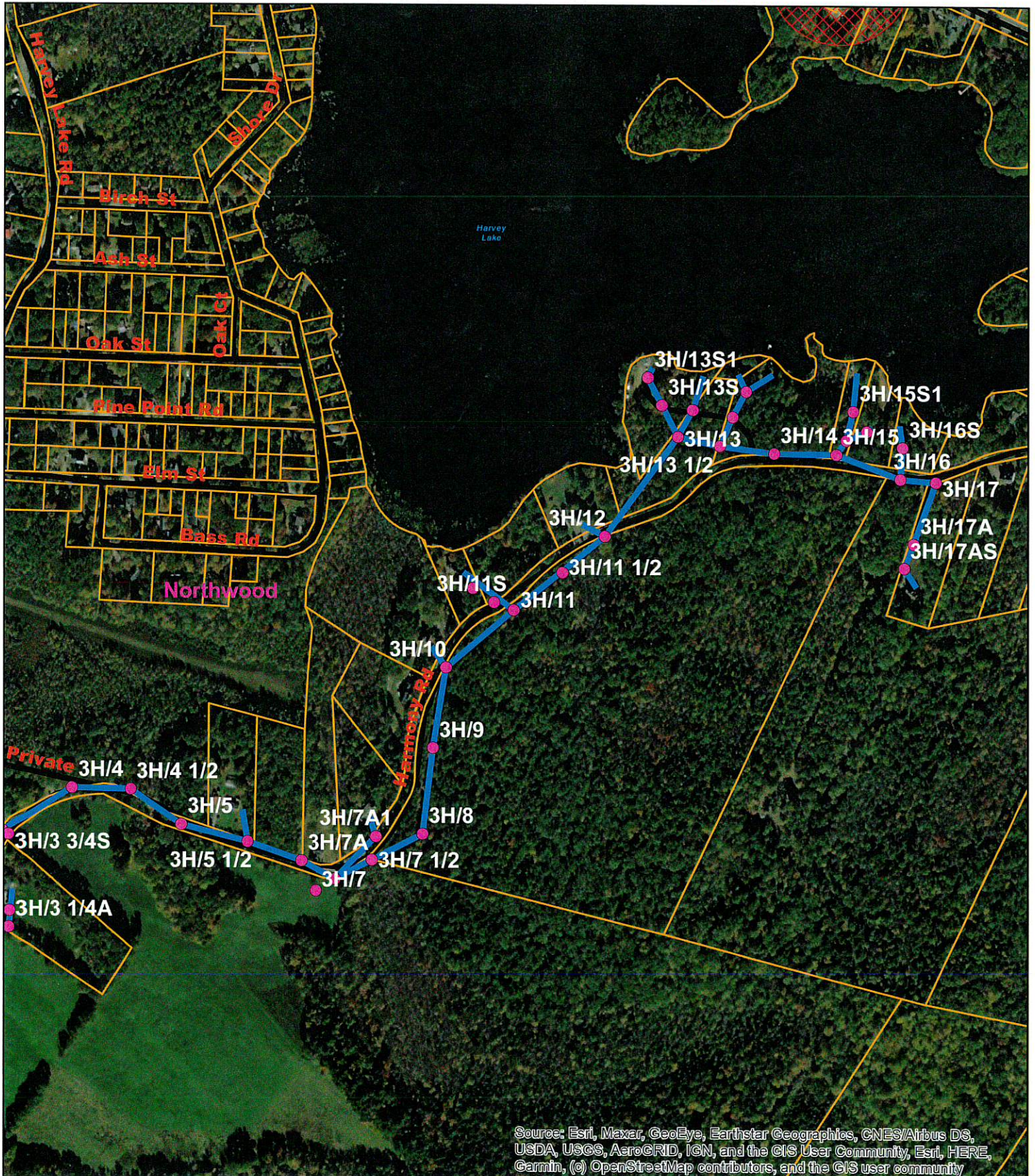
Source: Esri, Maxar, GeoEye, Earthstar Geographics, CNES/Airbus DS, USDA, USGS, AeroGRID, IGN, and the GIS User Community, Esri, HERE, Garmin, (c) OpenStreetMap contributors, and the GIS user community

QS1415-LE13, 1510-3F, 1714-3H
Deerfield, Epsom, Northwood
2022 Treatment Map
40.96 Potential Acres
Raymond District



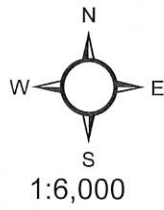
Legend

- 1714-3H_3H_Tap_Northwood_Poles
- 1510-3F_Epsom_Northwood_Poles
- QS1415-LE13_Deerfield_Epsom_Northwood_Nottingham_Poles
- 2022 Public Wells
- 2022 Private Wells
- 2022 Roadside No Spray Segments
- 2022 Public Well Buffers
- 2022 Public Surface Water Buffer



Source: Esri, Maxar, GeoEye, Earthstar Geographics, CNES/Airbus DS,
 USDA, USGS, AeroGRID, IGN, and the GIS User Community, Esri, HERE,
 Garmin, (c) OpenStreetMap contributors, and the GIS user community

QS1415-LE13, 1510-3F, 1714-3H
Deerfield, Epsom, Northwood
2022 Treatment Map
40.96 Potential Acres
Raymond District



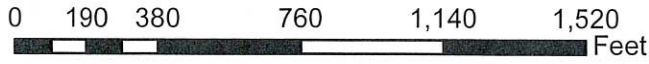
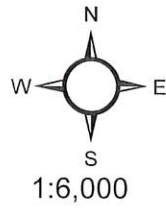
Legend

- 1714-3H_3H_Tap_Northwood_Poles
- 1510-3F_Epsom_Northwood_Poles
- QS1415-LE13_Deerfield_Epsom_Northwood_Nottingham_Poles
- 2022 Public Wells
- 2022 Private Wells
- 2022 Roadside No Spray Segments
- 2022 Public Well Buffers
- 2022 Public Surface Water Buffer



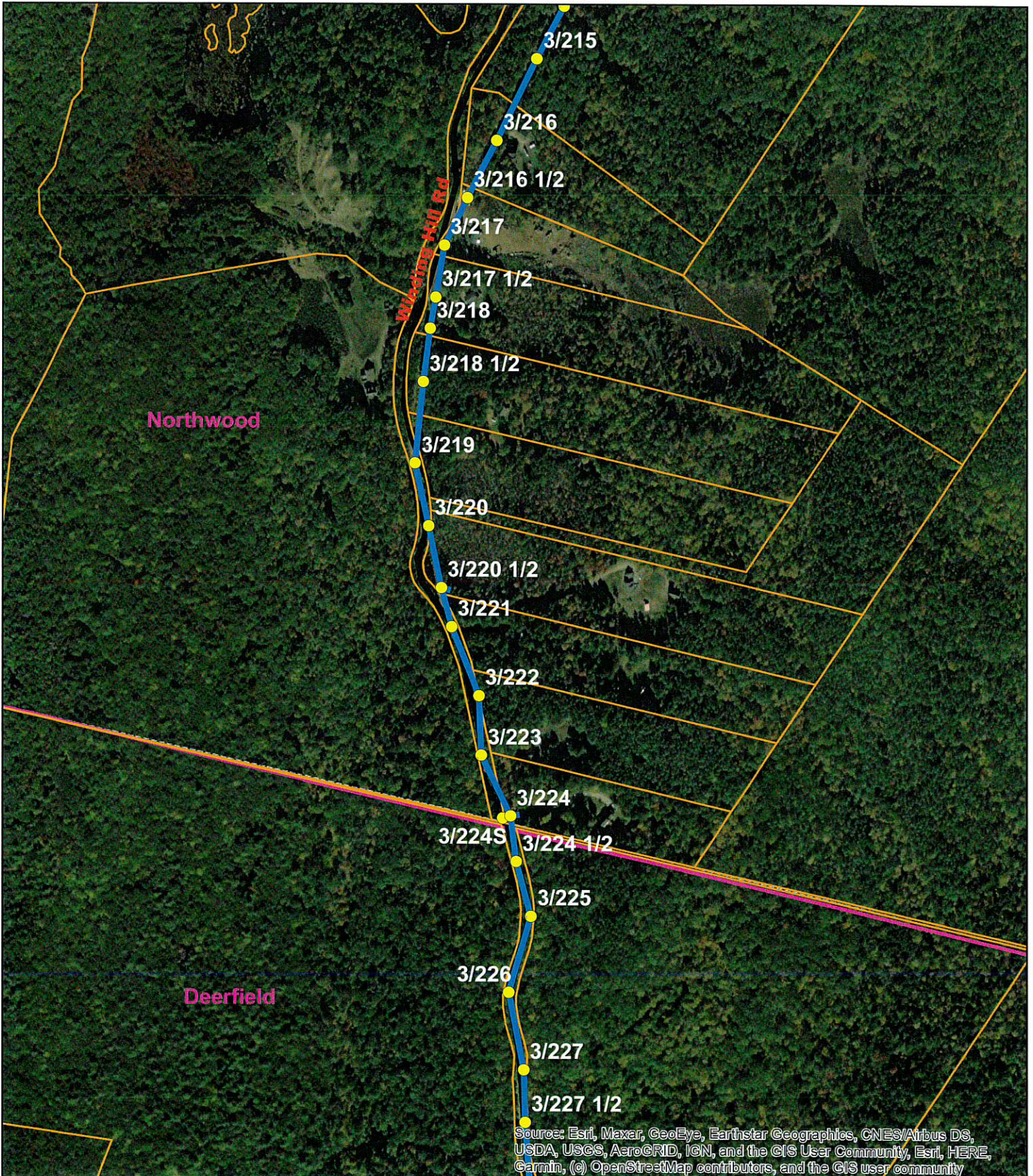
Sources: Esri, Maxar, GeoEye, Earthstar Geographics, CNES/Airbus DS, USDA, USGS, AeroGRID, IGN, and the GIS User Community, Esri, HERE, Garmin, (c) OpenStreetMap contributors, and the GIS user community

QS1415-LE13, 1510-3F, 1714-3H
Deerfield, Epsom, Northwood
2022 Treatment Map
40.96 Potential Acres
Raymond District



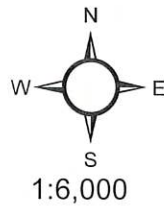
Legend

- 1714-3H_3H_Tap_Northwood_Poles
- 1510-3F_Epsom_Northwood_Poles
- QS1415-LE13_Deerfield_Epsom_Northwood_Nottingham_Poles
- 2022 Public Wells
- 2022 Private Wells
- 2022 Roadside No Spray Segments
- 2022 Public Well Buffers
- 2022 Public Surface Water Buffer



Source: Esri, Maxar, GeoEye, Earthstar Geographics, CNES/Airbus DS,
 USDA, USGS, AeroGRID, IGN, and the GIS User Community, Esri, HERE,
 Garmin, (c) OpenStreetMap contributors, and the GIS user community

QS1415-LE13, 1510-3F, 1714-3H
Deerfield, Epsom, Northwood
2022 Treatment Map
40.96 Potential Acres
Raymond District



Legend

- 1714-3H_3H_Tap_Northwood_Poles
- 1510-3F_Epsom_Northwood_Poles
- QS1415-LE13_Deerfield_Epsom_Northwood_Nottingham_Poles
- 2022 Public Wells
- 2022 Private Wells
- 2022 Roadside No Spray Segments
- 2022 Public Well Buffers
- 2022 Public Surface Water Buffer

